

Coffee Shop Design



Student: Shahnaz Dehghani

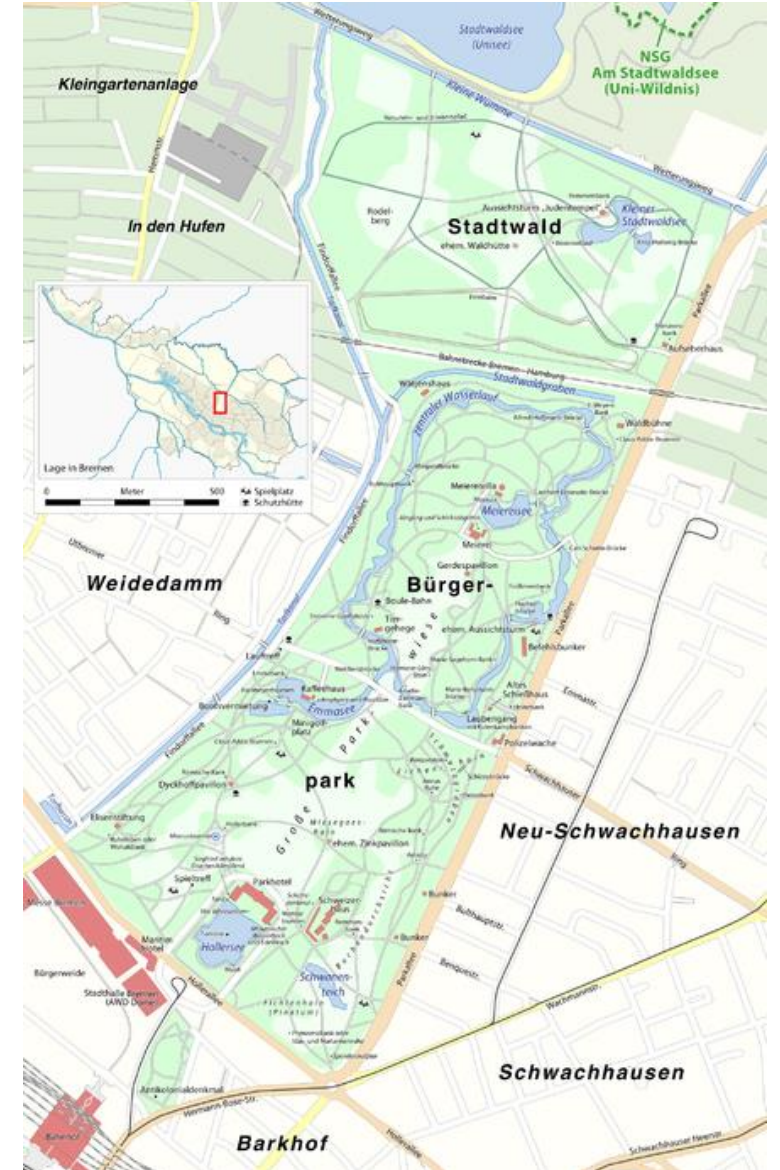
Professor: Dr. Keshtkar

Architectural Basic Design II

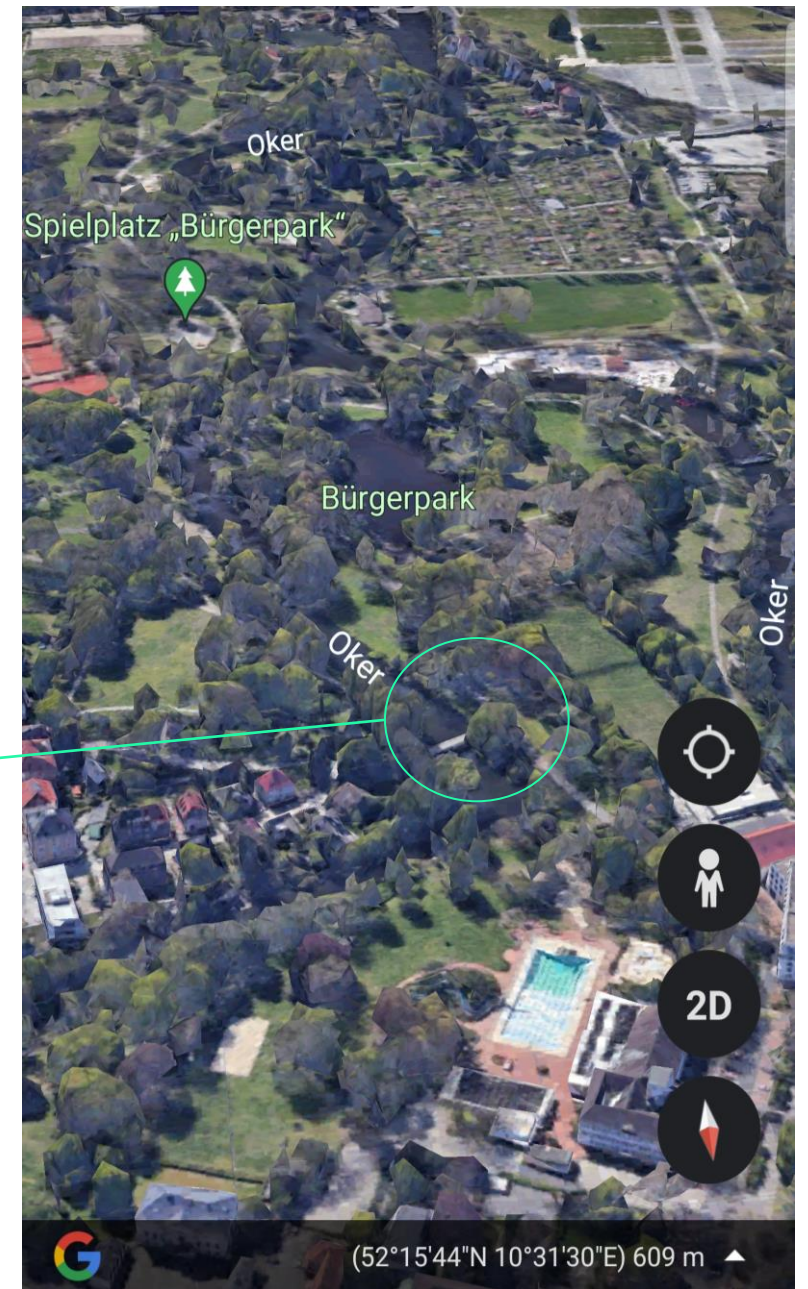
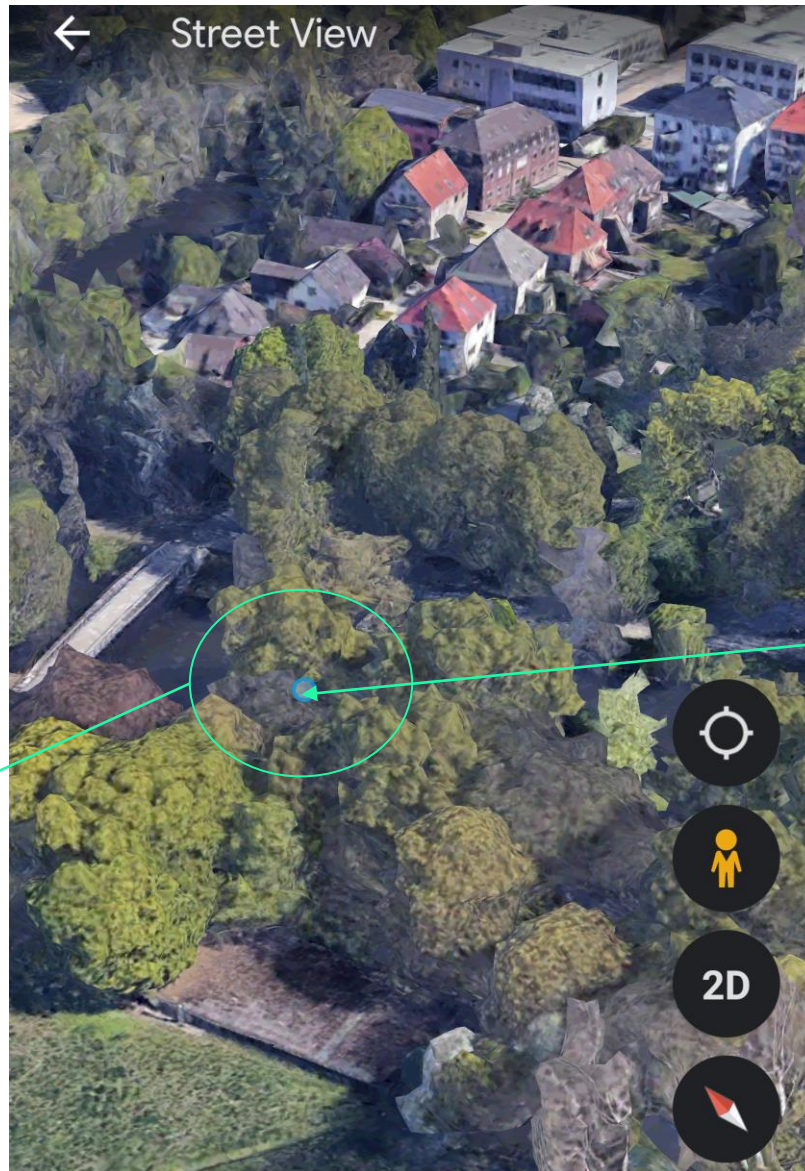
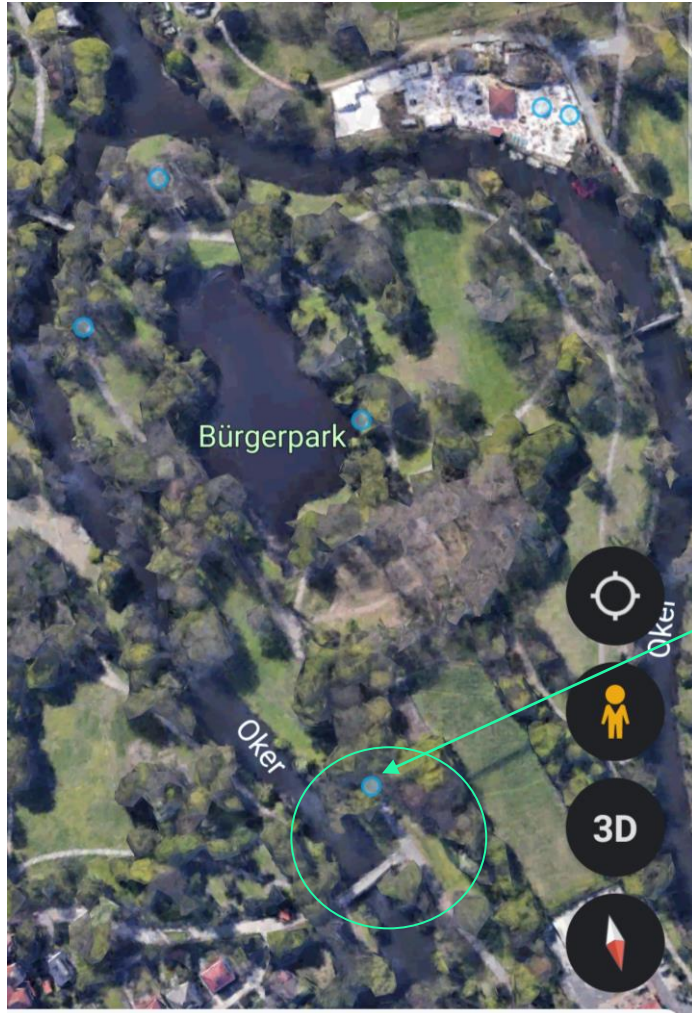
General specifications of the coffee shop:

The Bürgerpark and the Stadtwald are the most famous parks in Bremen (GERMANY)

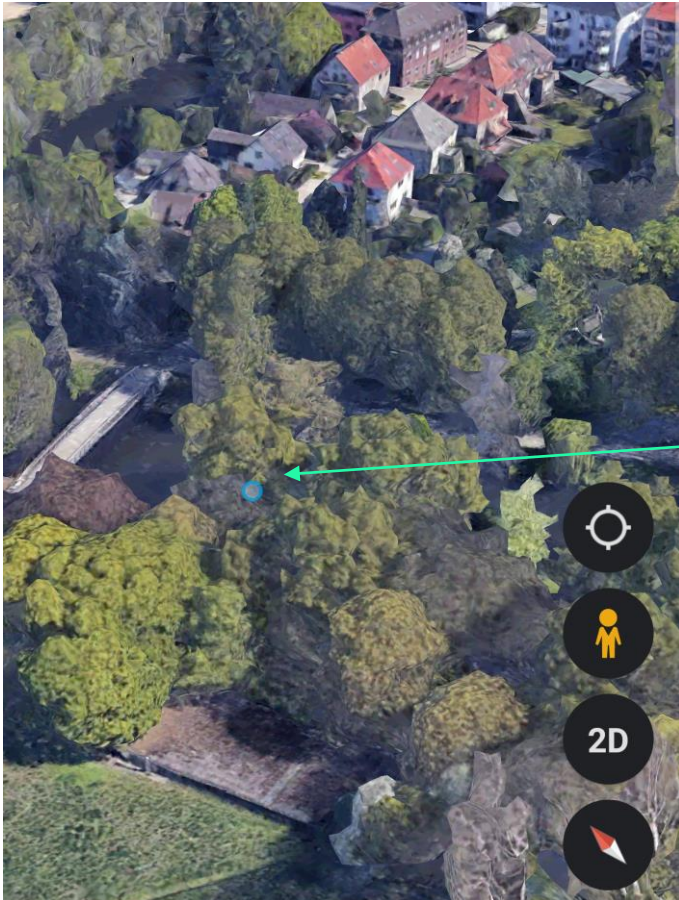
The Bürgerpark was created in the second half of the 19th century not far from the main train station as a classic public garden with lakes, coffee houses and lawns within the wooded areas.



Location:



Area for coffee shop :



View from outside the coffee shop:



Site Analysis:

The type of humans: All human beings in society.

Access:

Car: Around the park.

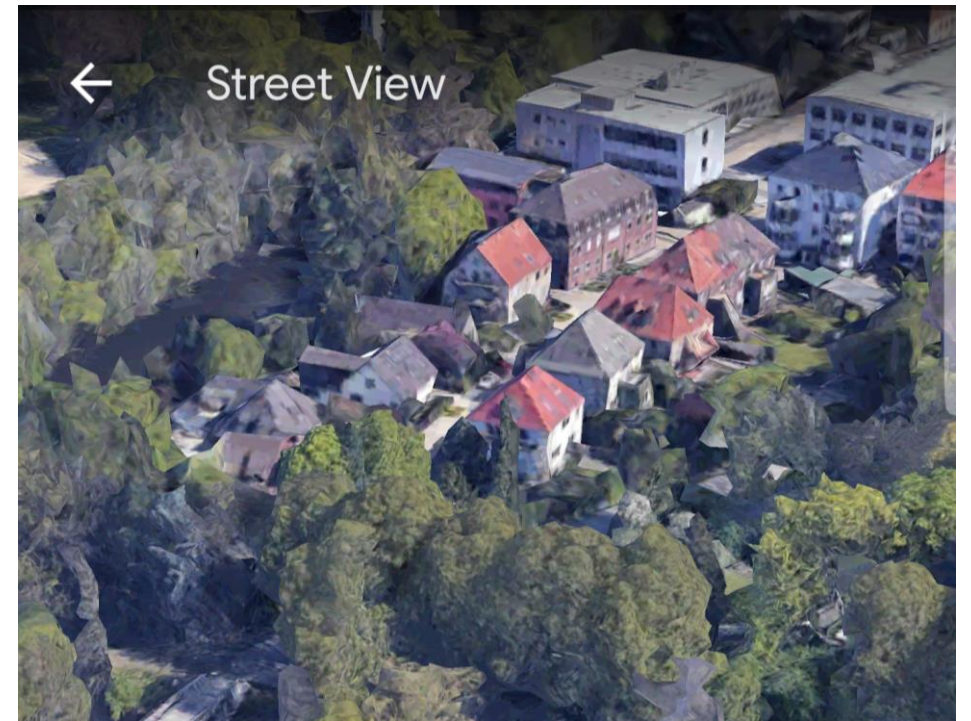
Humans: All parts of the park.

Buildings around the park:

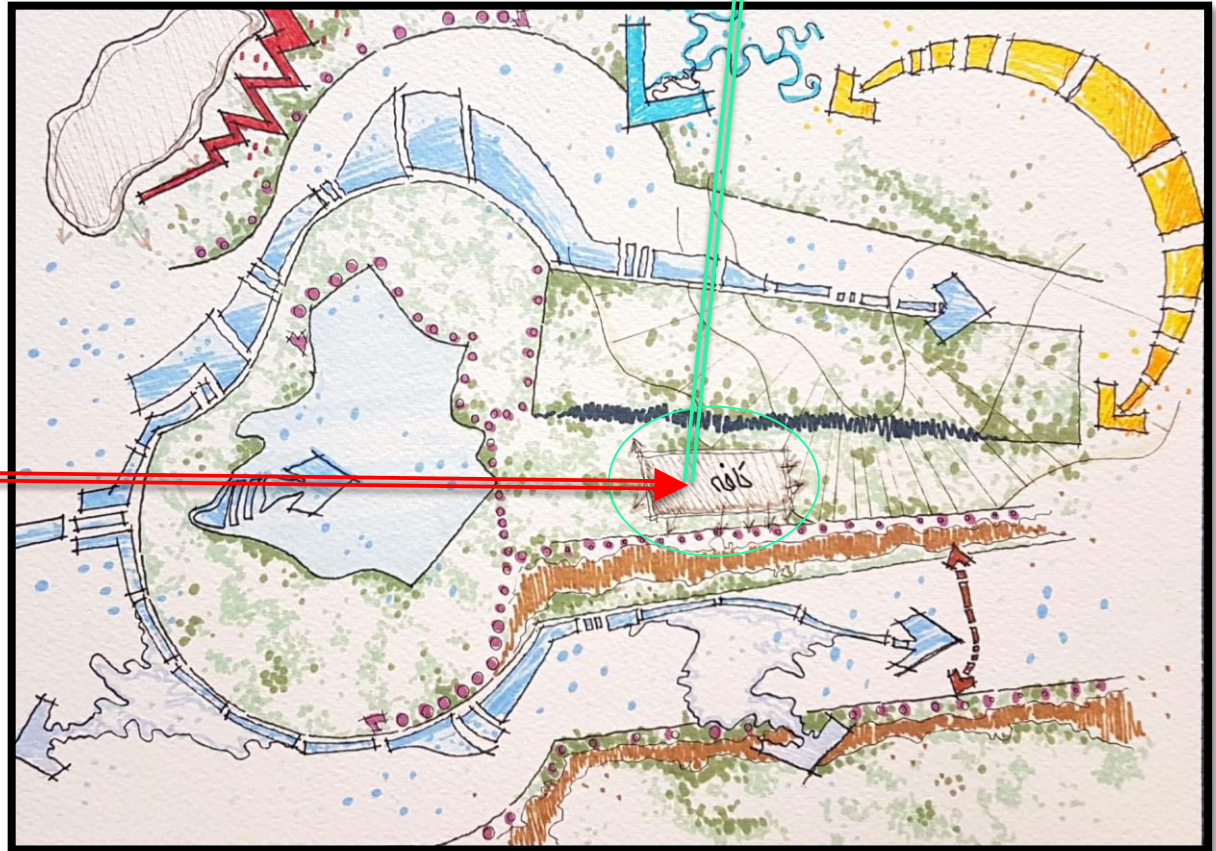
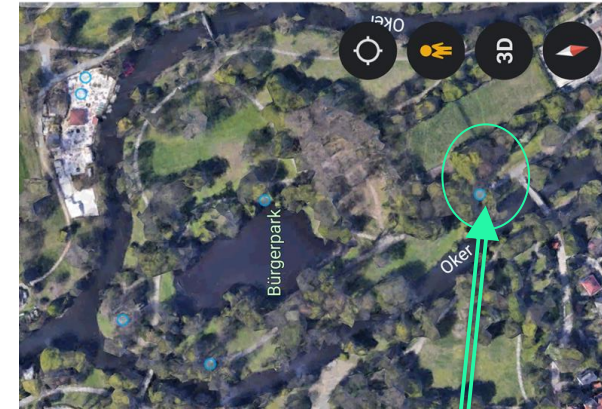
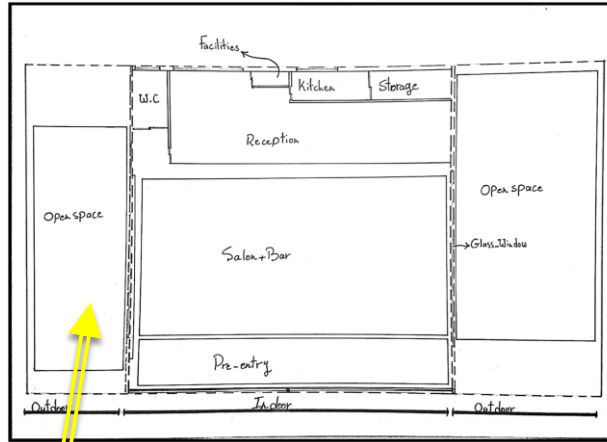
Church.

Residential.

Local shops & ...



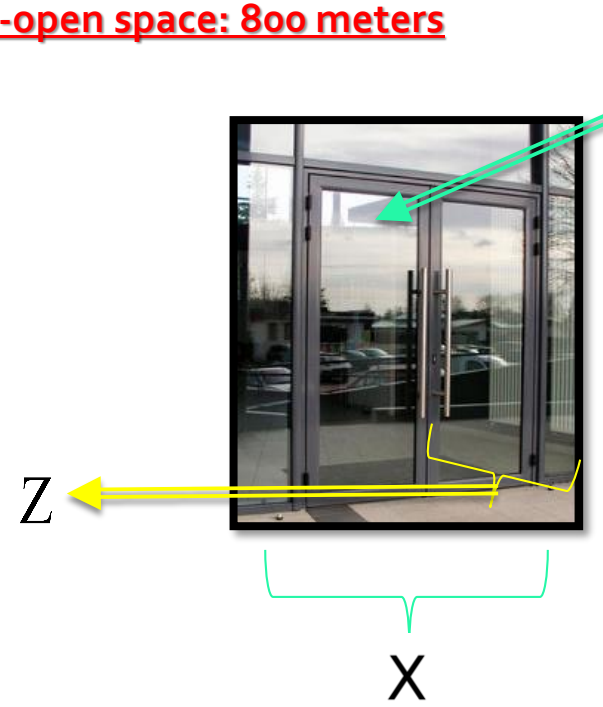
Site Analysis:



Physical program:

area measured in square meters: **1200** _(m2)

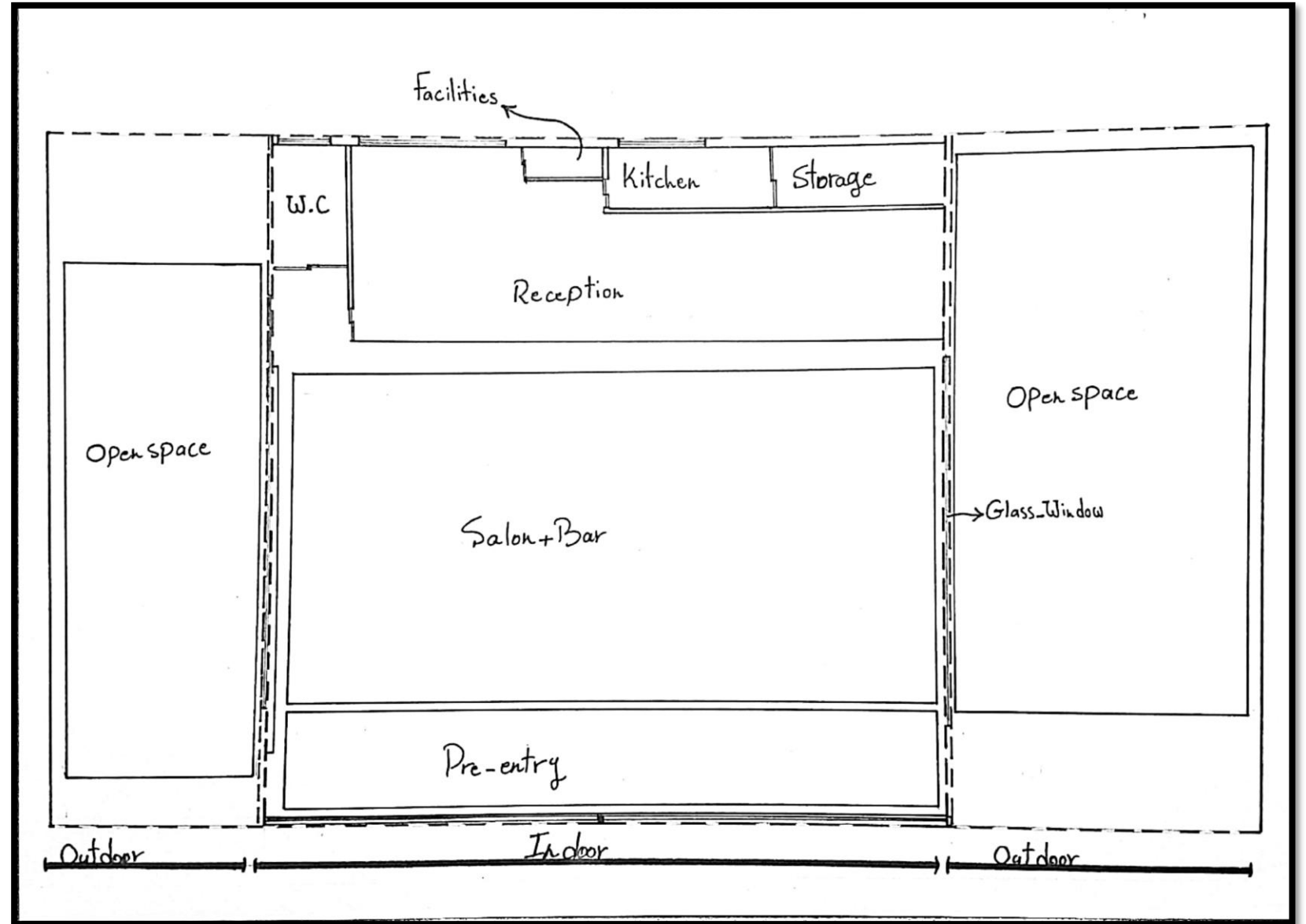
Closed space: 400 meters
Semi-open space: 800 meters



Entrance and exit	(h: 3 _(M) & X: 2 _(M) & Z: 0.5 _(M))X 2
Kitchen	25 _(M2)
W.C	15 _(M2)
Salon	800 _(M2) + 304 _(M2)
Barroom	↓
Facilities	
Reception	35 _(M2)
Storage	15 _(M2)
Bookshelf	h:1.5 _(M) & x: 5 _(M) & z: 0.5 _(M)
Outdoors	800 _(M2)

Site plan:

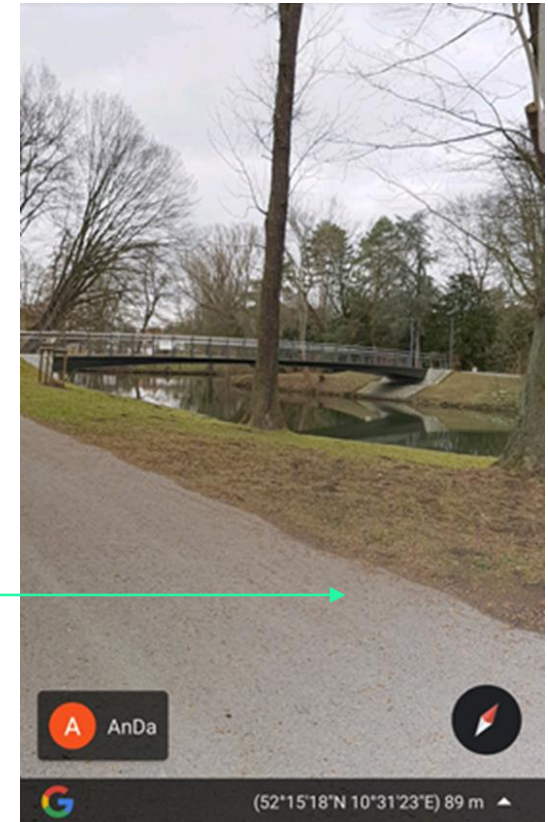
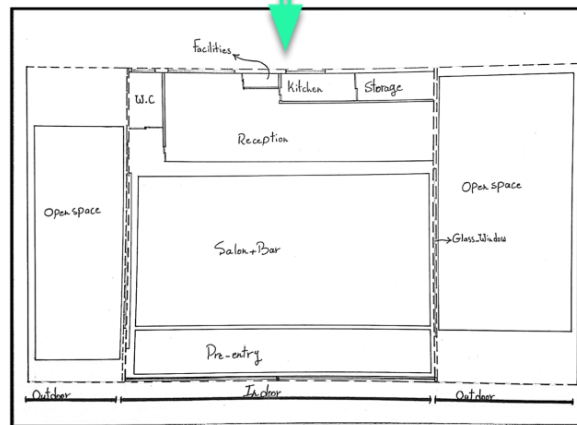
Second plan site:



View from outside the coffee shop:



Coffee shop



Concept:

General form of coffee shop:

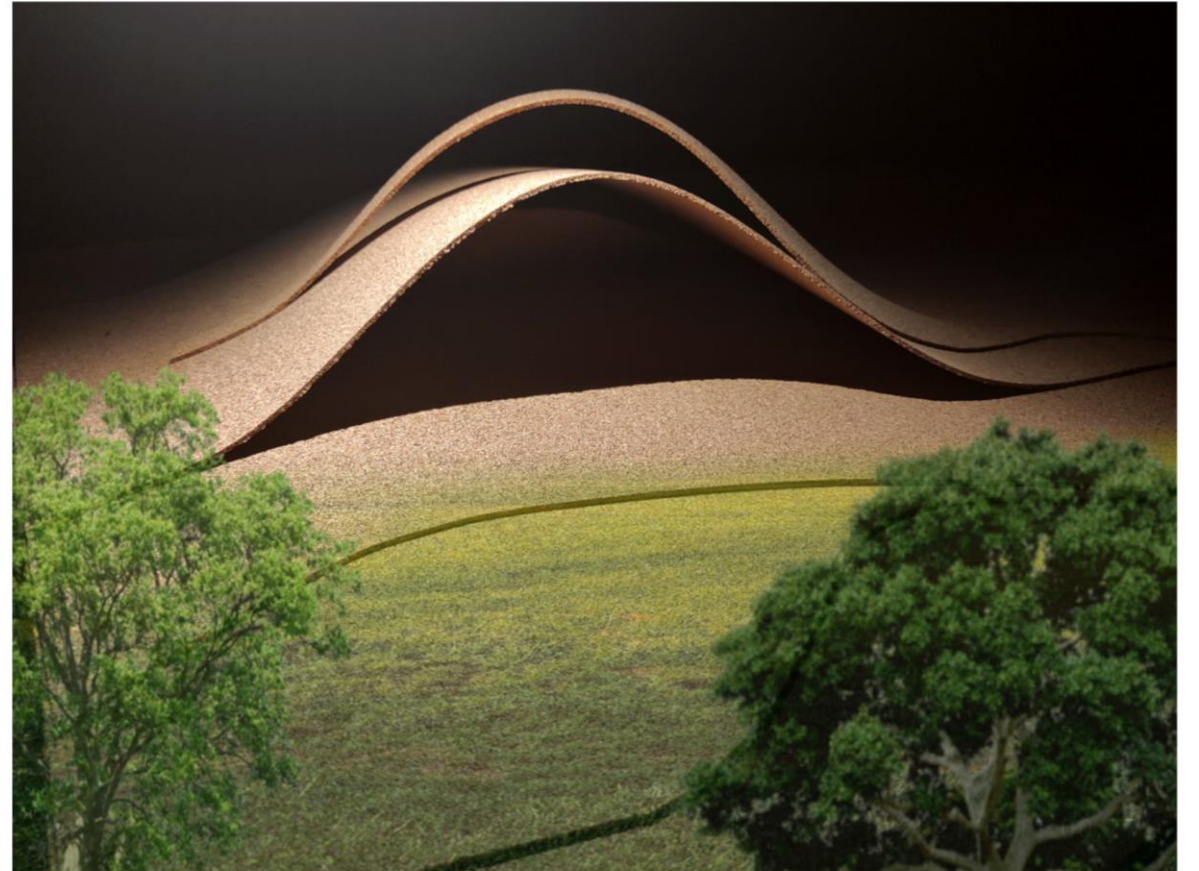
Concept: **Iranian** symbolic form: **arch**

Reason: New form for that area
And attracting indigenous and non-indigenous people.

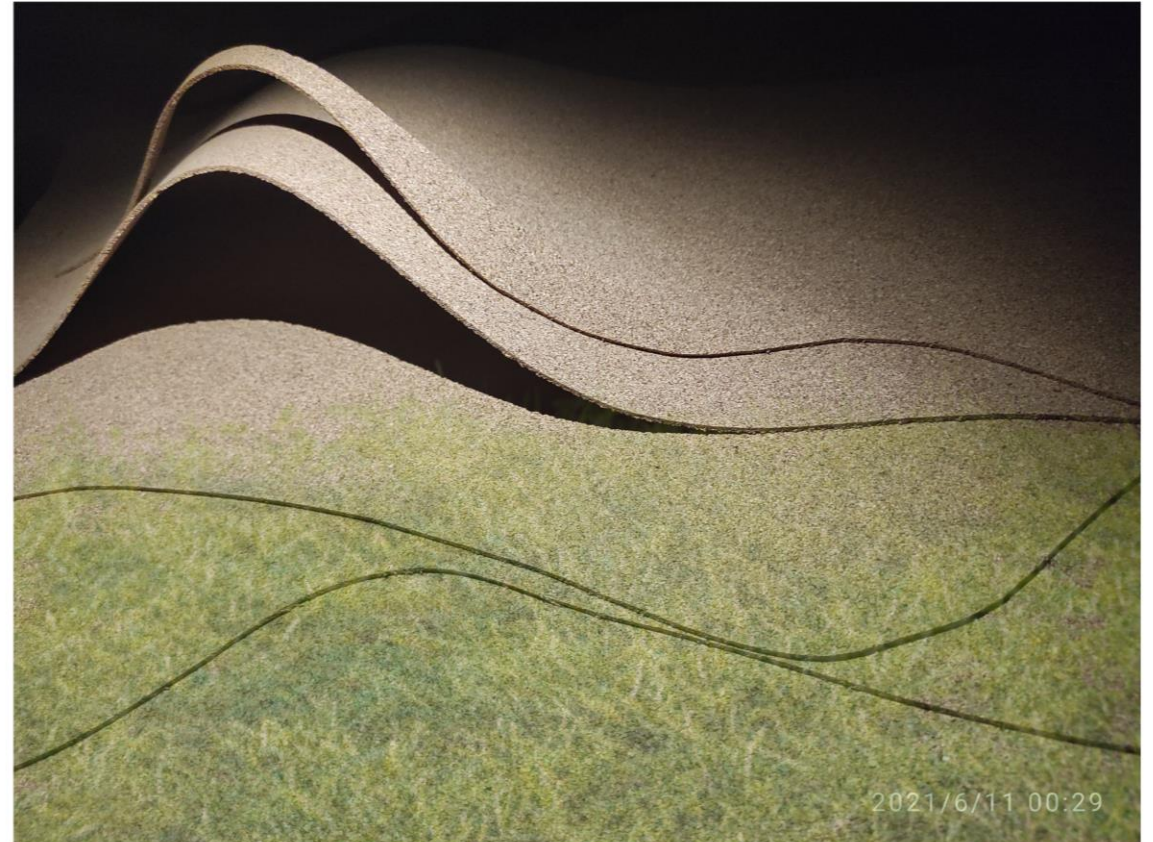
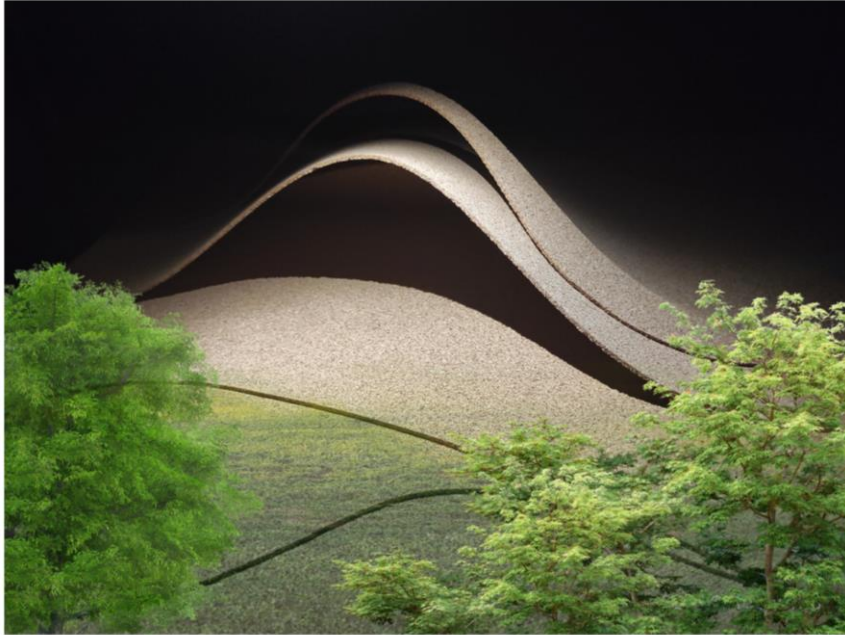


Maquette:

General form of coffee shop:

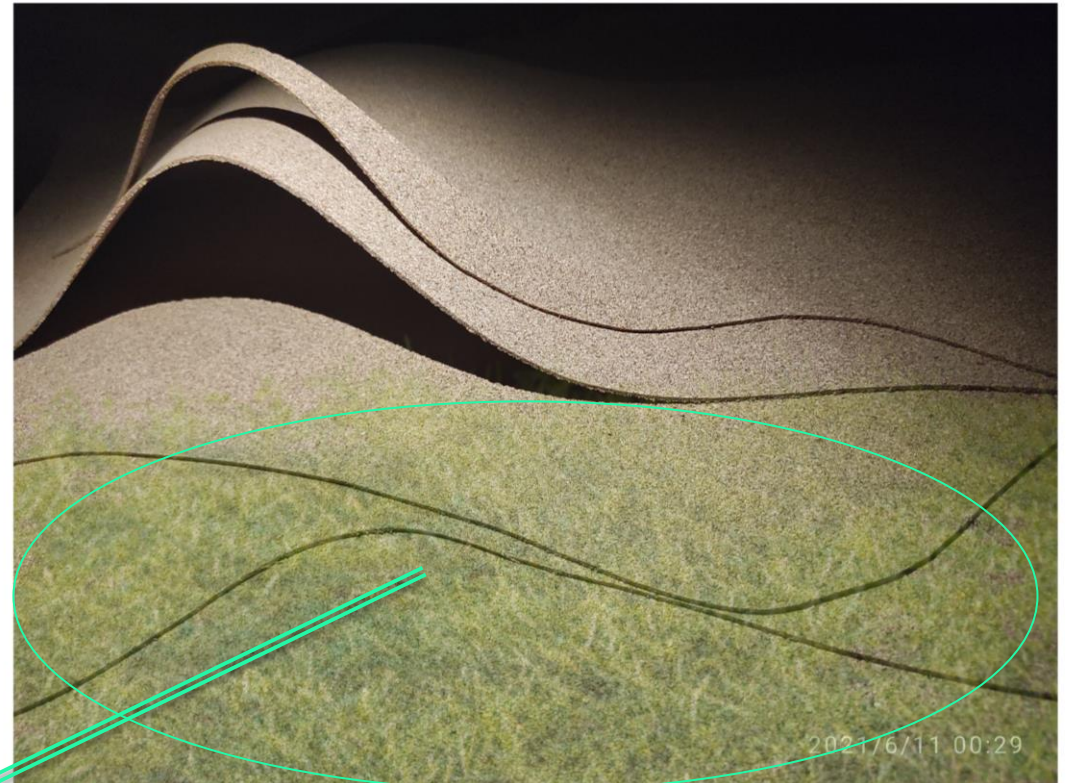
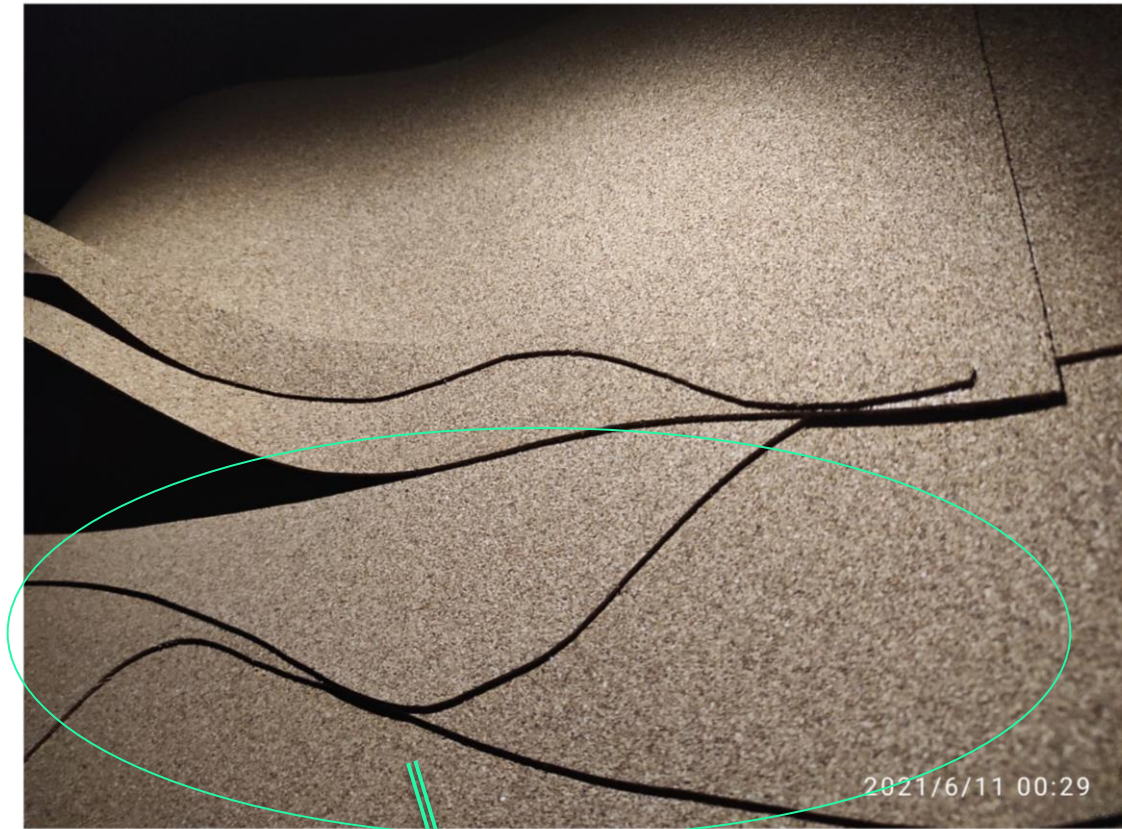


Maquette:



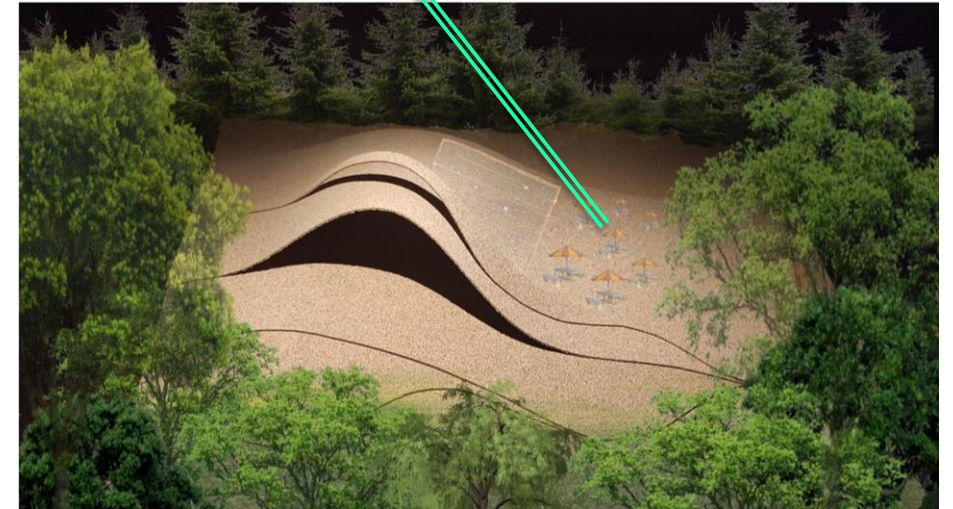
Surrounding natural materials: Photoshop

Form:



Site ground mode

View of coffee shop in the place:



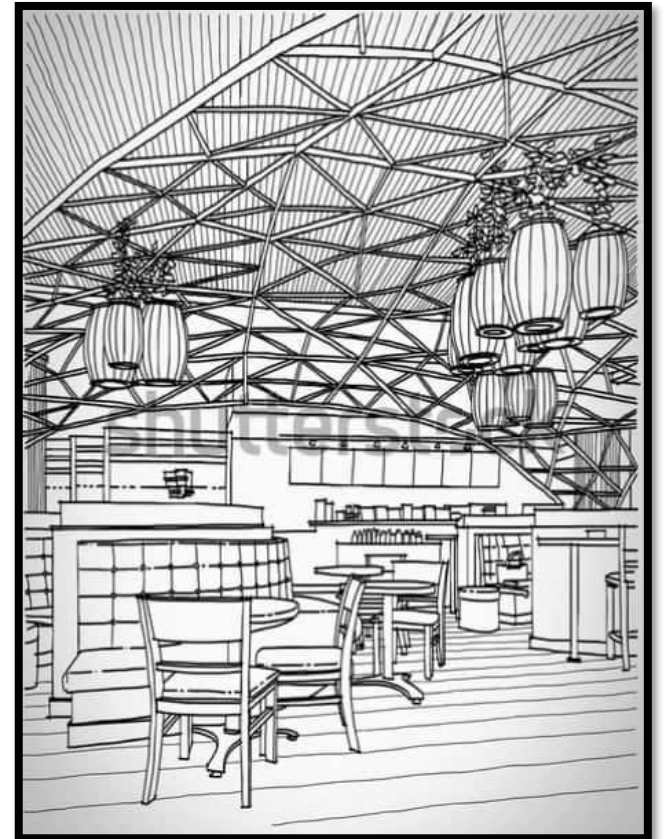
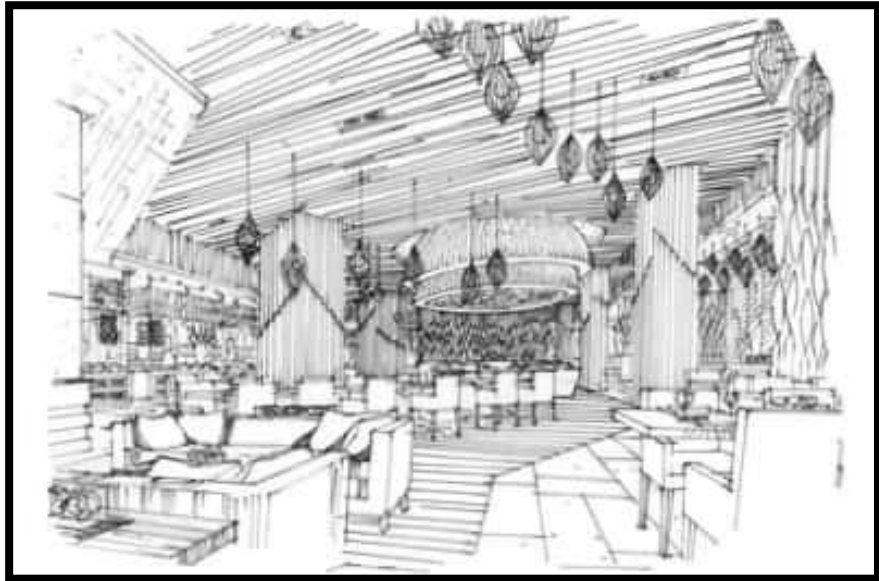
Coffee shop on site:



Interior design:

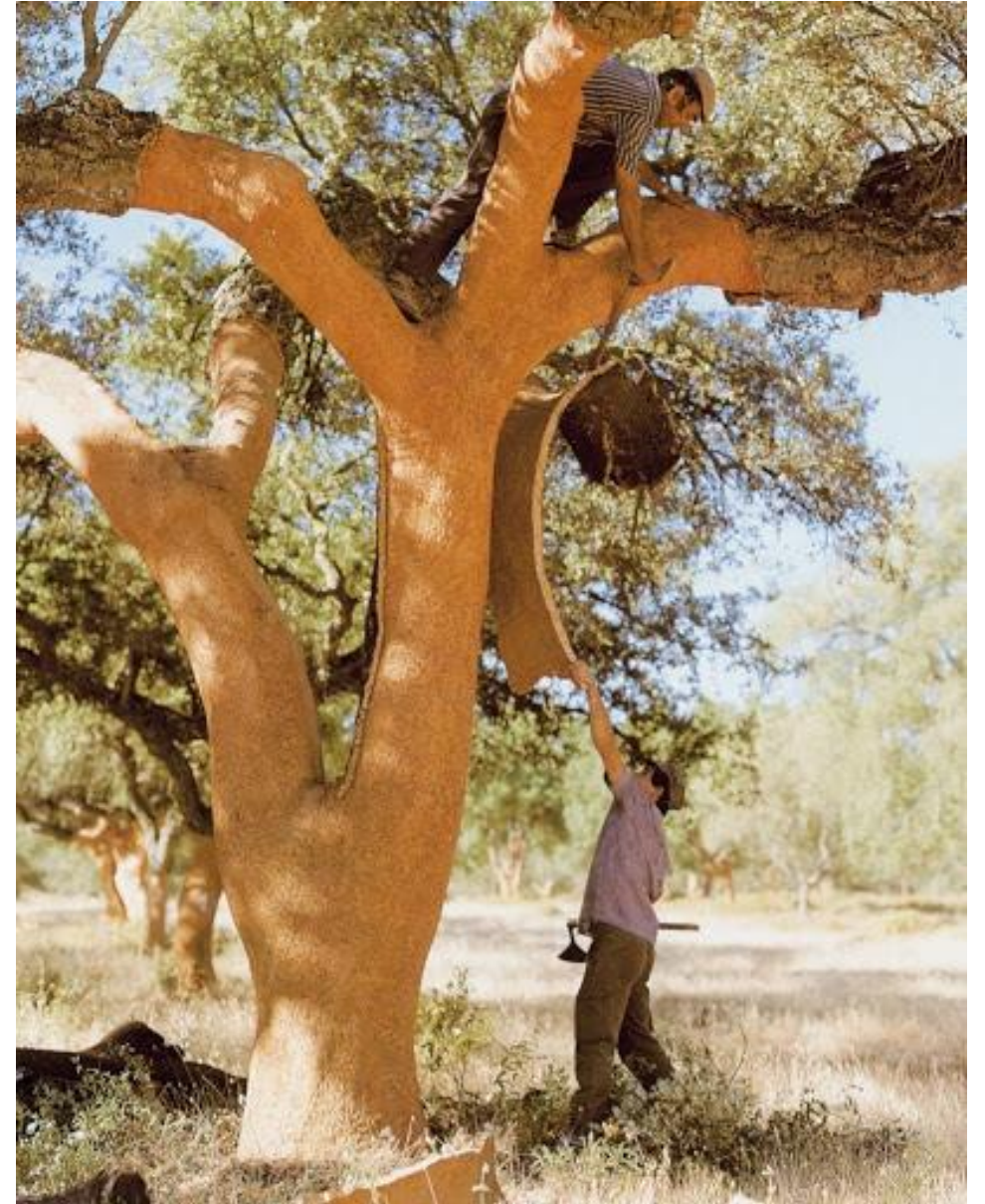


Interior design:



Maquette materials:

Cork: Natural and environmentally friendly texture





Thank You