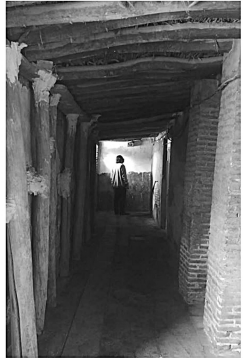


Art Museum

Sana Eini

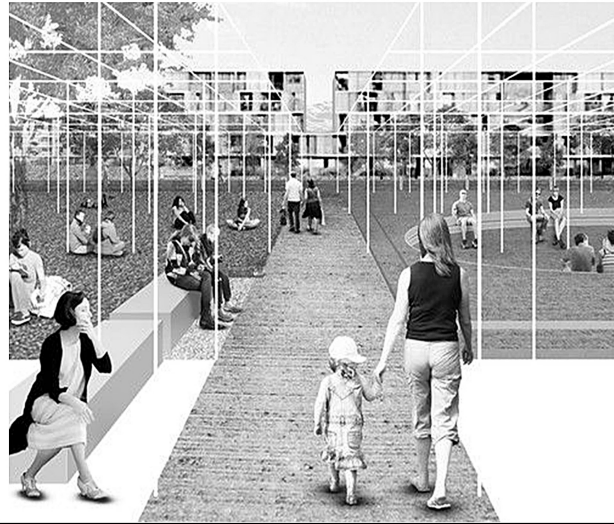
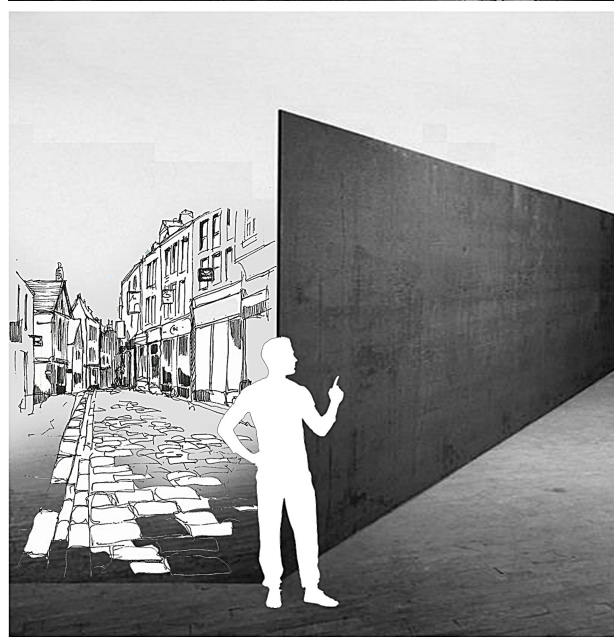
01

Impact of urban context



Oudlajan and its values

Passages as its identity, gardens that are no more, rusty doors and materials echoes in the passages, old wood in structures, warehouses and aqueducts, dead ends as a frame for a door, gathering of different ethnic groups and sabbaths as the quality of the space. All these features and spatial experiences have had a great impact on the formation of modern buildings and city yards and the communication space. between the local context and the thriving market space.



The main concept

Among the differences, values are seen and formed. It can not be the same as in the past, nor can it be repeated. The modern building is born from the heart of history, which is not unlike the past and is not like it, a work that reflects the values and patterns of ancient architecture in a new form and appearance. Another look at the passages, the canopies, Streams and waterways represent another period in the history of architecture. The combination of building density and dispersion, new and old styles makes both effects noticeable.

Middle oudlajan

Valuable old residential houses

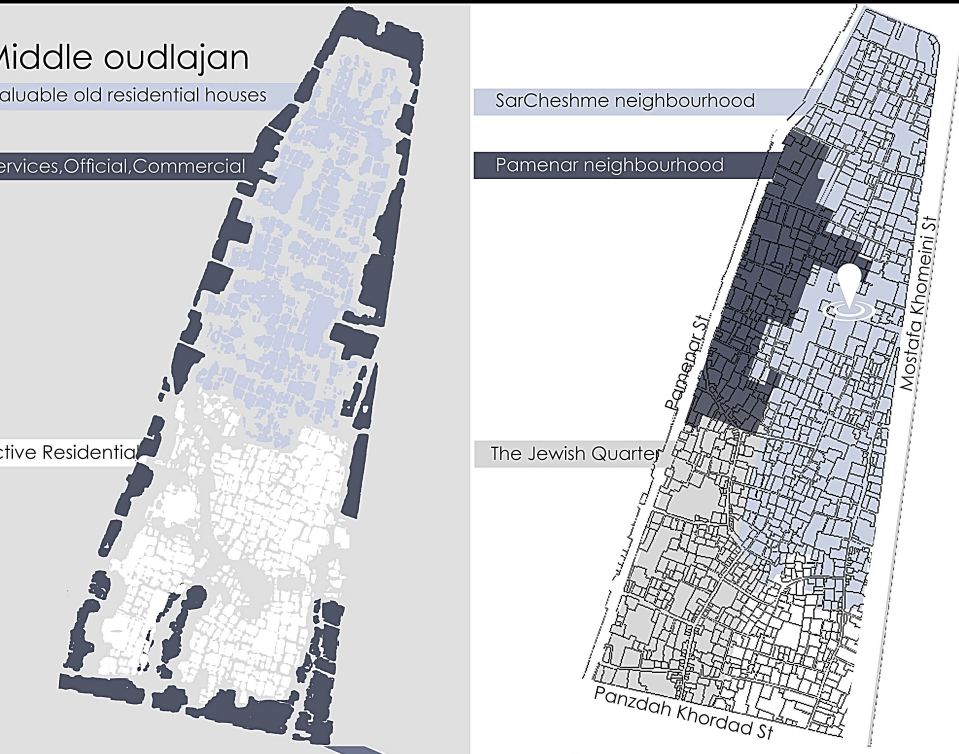
Services, Official, Commercial

Active Residential

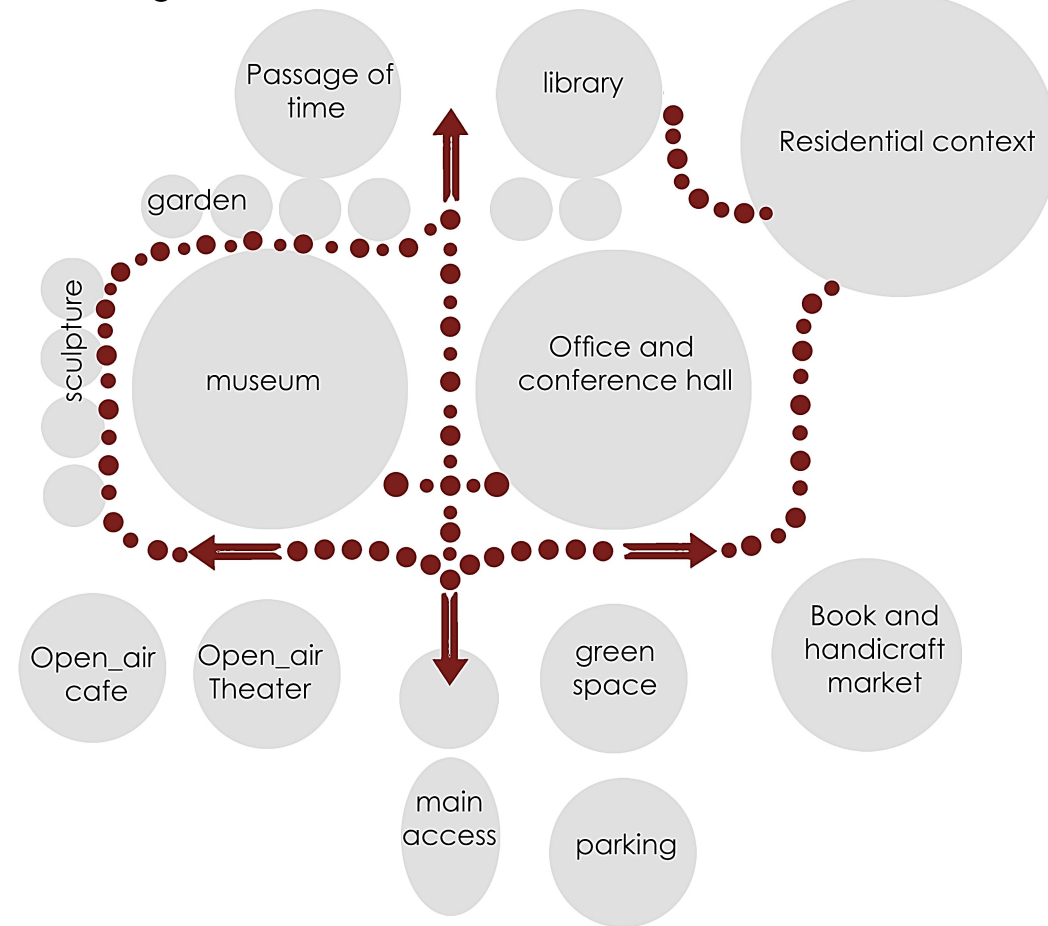
SarCheshme neighbourhood

Pamenar neighbourhood

The Jewish Quarter



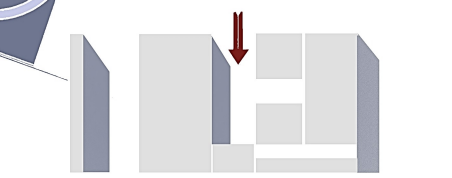
User diagrams



Local architectural features

- Squares and spaces for pause
- Mosque minaret as a landmark
- The low height of the houses
- uniform skyline
- Dividing and separating neighborhoods with main passages
- The important role of aqueducts and springs and the path of water in the formation of streets

Climate impact



Existence of open spaces for the use of wind, light and shadow



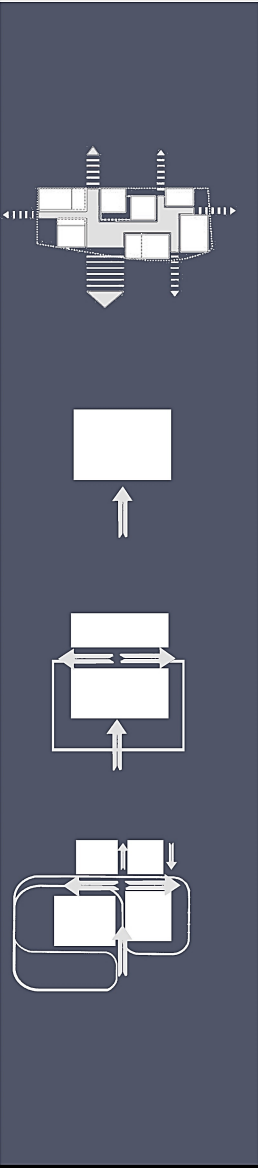
Narrow passages for shading
Sloping roof to direct rain and snow towards the yards

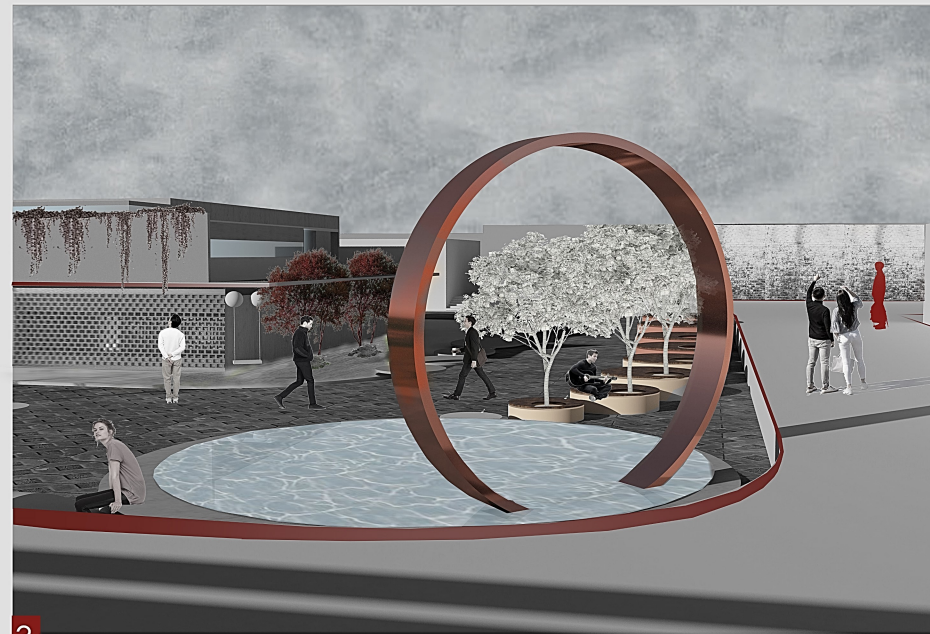
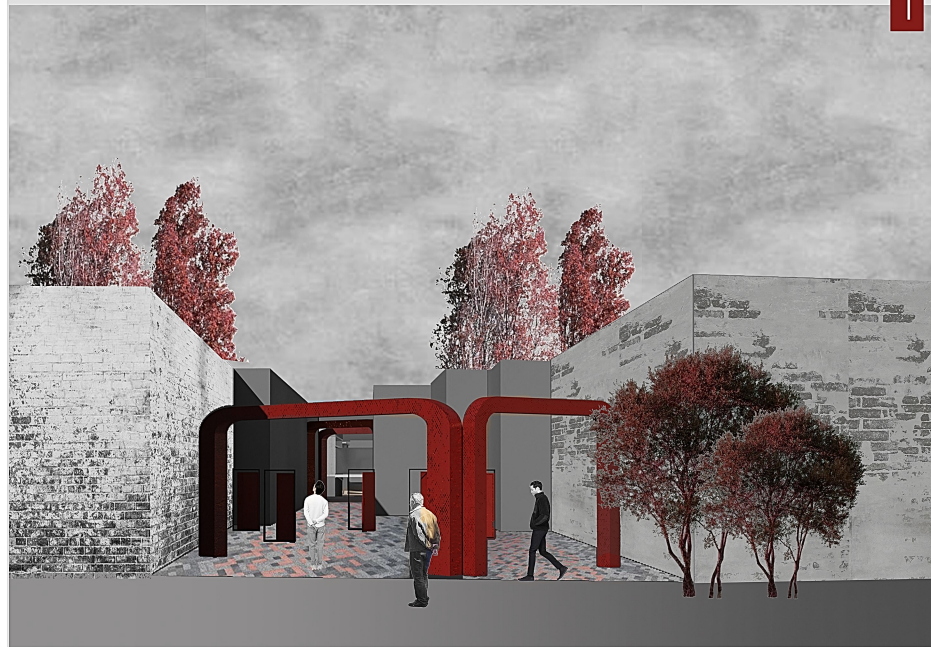


Place the building on a negative level to reduce heat exchange



U-shaped surface of the earth to absorb the sun and better cooling and heating





Activities and events that can take place in the space of the art museum



Resting for food and beverage



stopping for reading+research



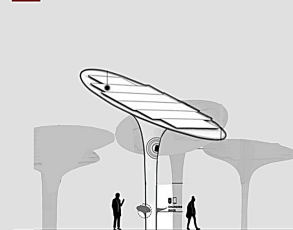
Cultural conferences and seminars



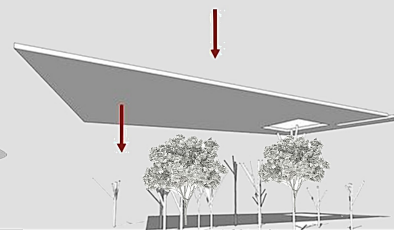
Gathering place



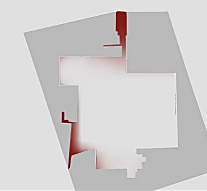
Temporary+Permanent exhibition



Solar tree with solar cells on the roof



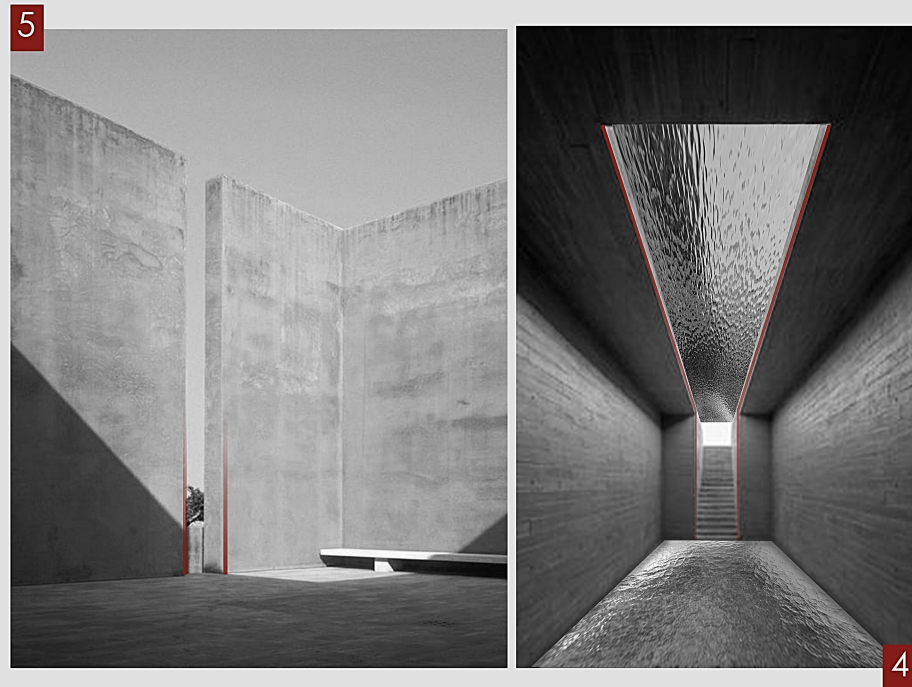
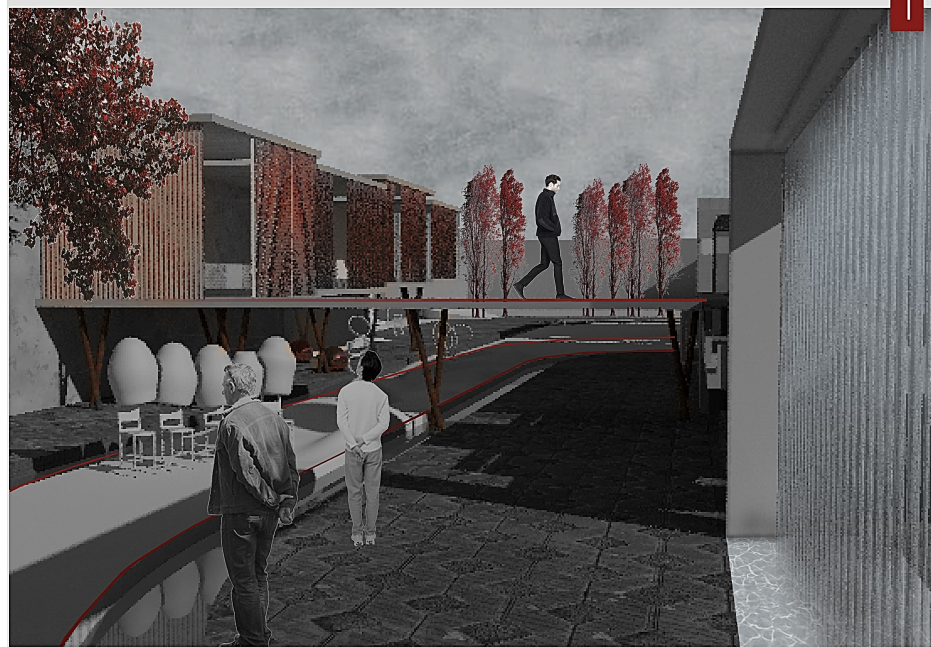
Canopies and a symbol for gardens that are no more



Public primary access

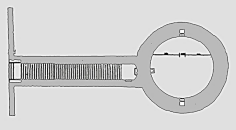
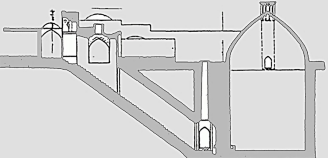
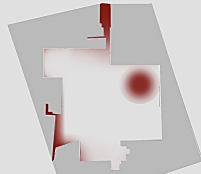
Tour Guide

- 1 Public primary access as a Social connection point,Turning a forgotten place into a destination
- 2 Green space for youth gatherings and relaxation.
- 3 Green space and the route of local residents.
- 4 Open air cafeteria , engraved walls, Memories and remnants of the past.



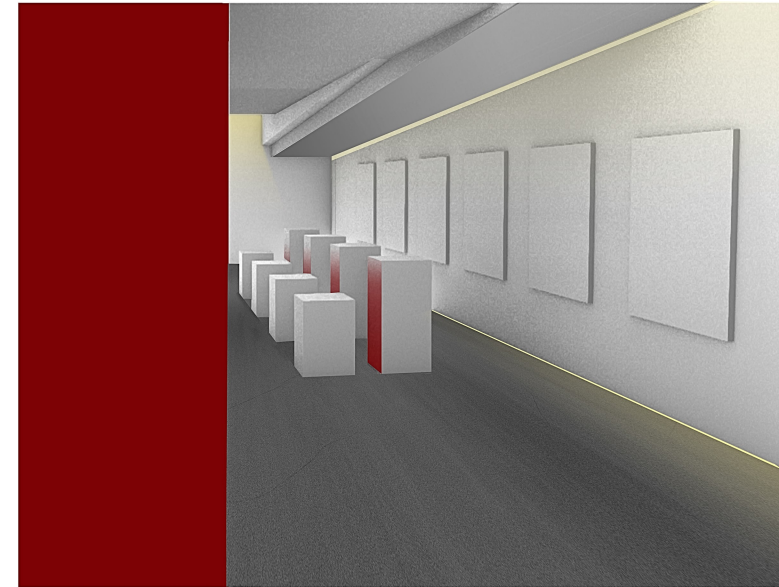
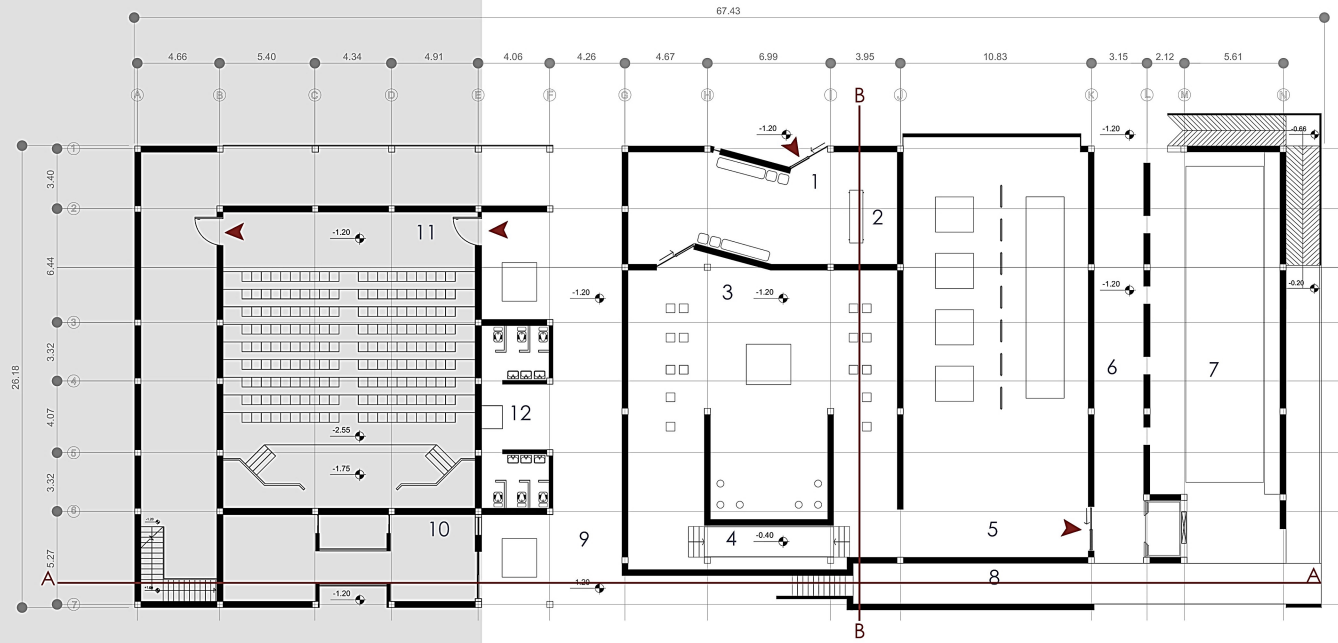
Activities and events that can take place in the space of the art museum

- 
 Resting for food and beverage
- 
 stopping for reading+research
- 
 Cultural conferences and seminars
- 
 Gathering place
- 
 Temporary+Permanent exhibition

- 
 Old water tank design ideas
- 
 Section of water tank
 Loss of function
 Symbolic use
- 
 Location of community and amphitheater spaces

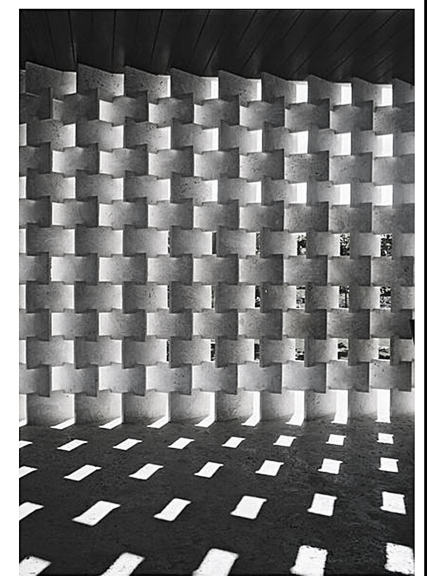
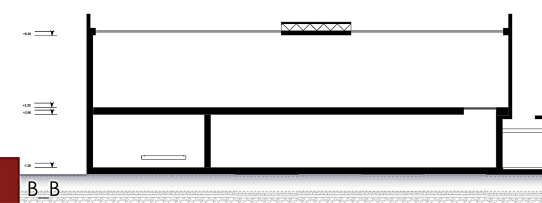
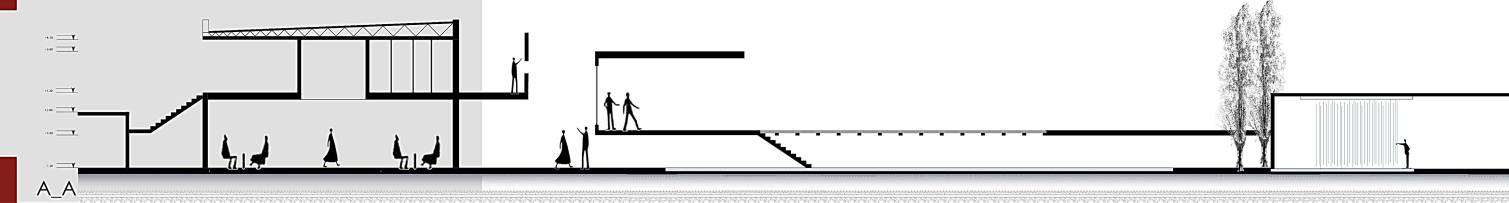
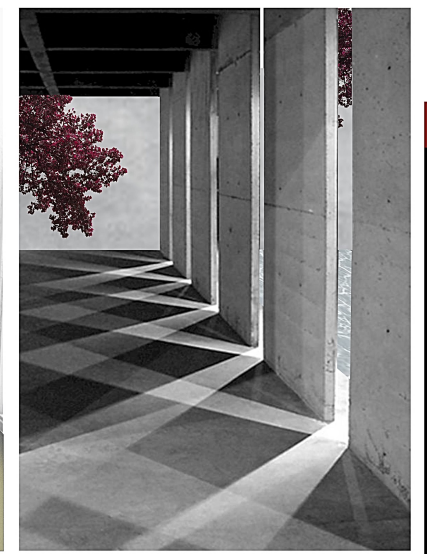
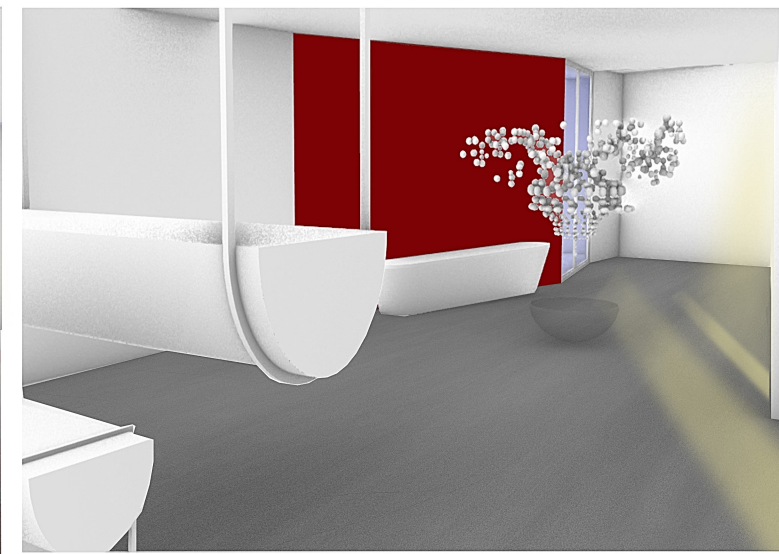
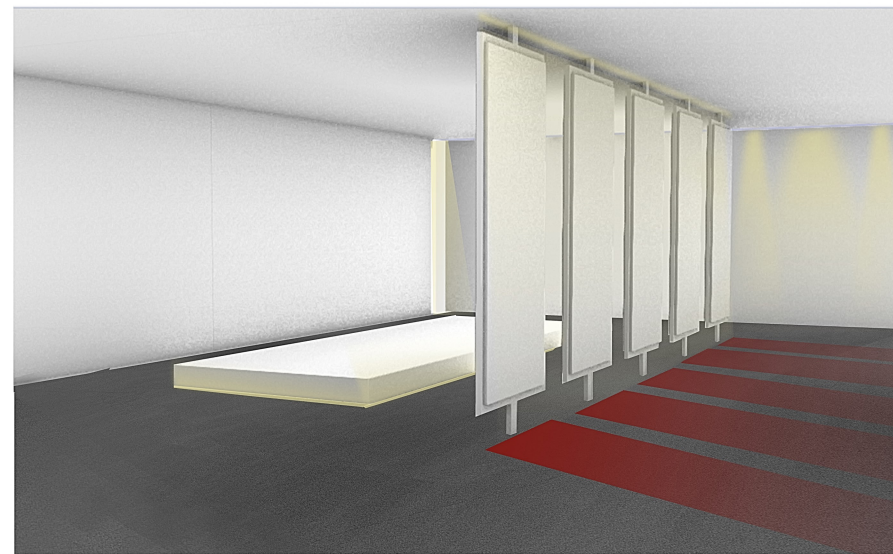
Tour Guide

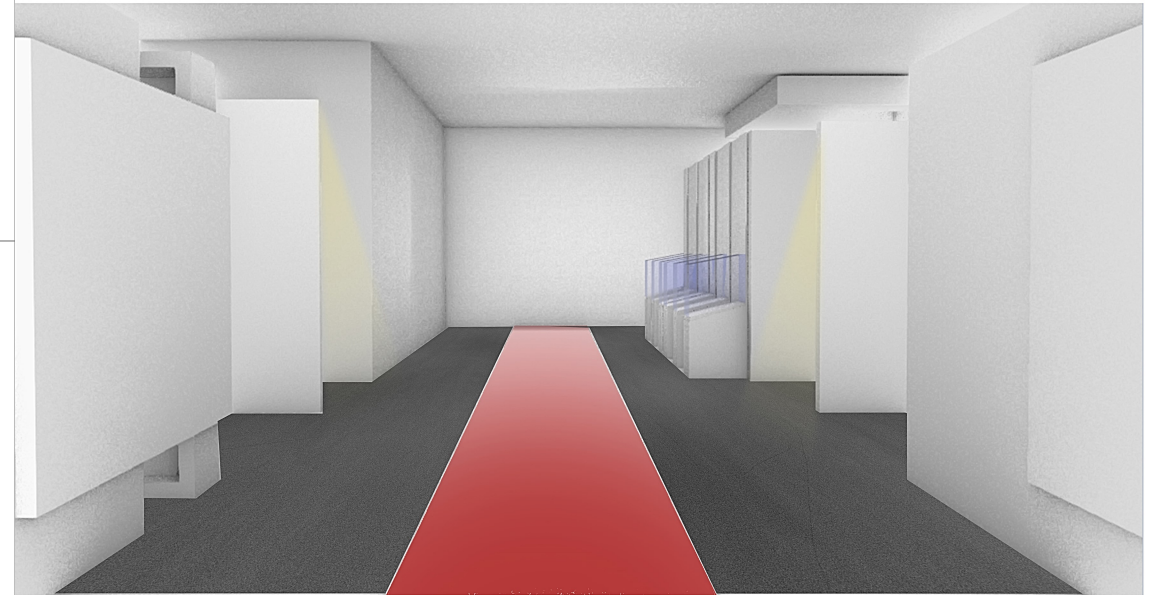
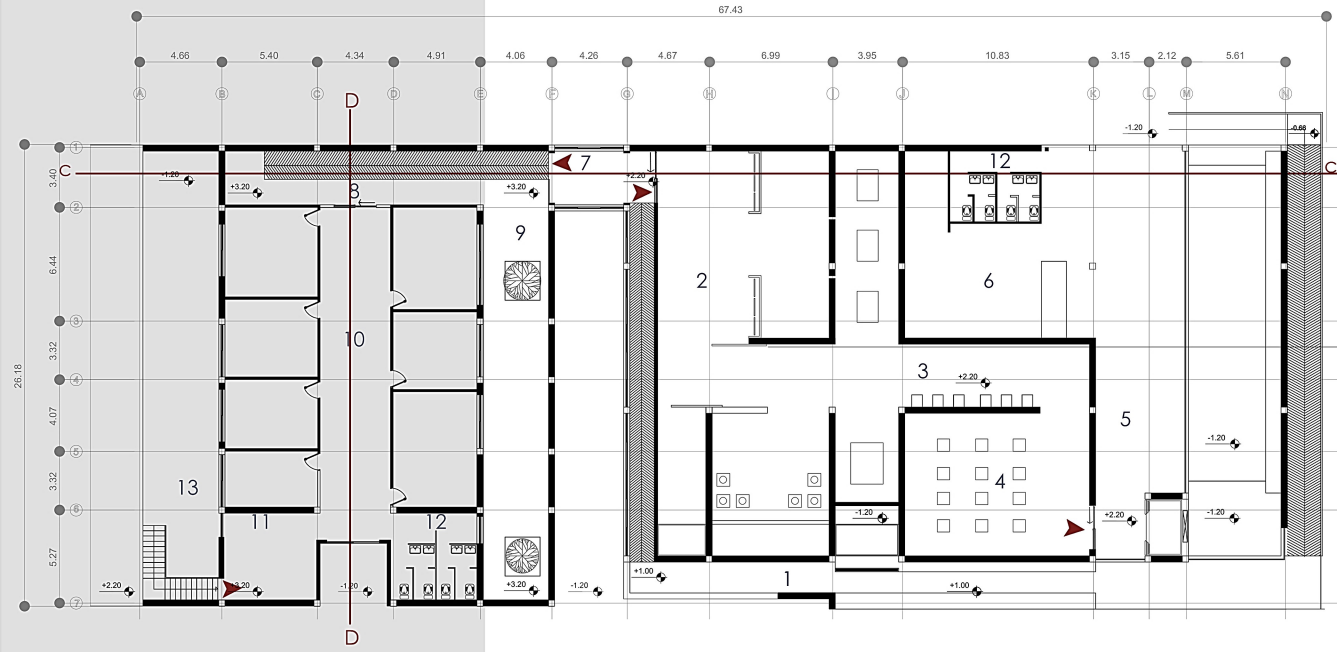
- 1** Crossing the sculpture garden and the time bridge with material from the past.
- 2** Squares and Pause spaces
Separate paths and narrow alley.
- 3** Open-air amphitheater with music and a mirrored stage.
The cafeteria
- 4** Crossing the water tank, walking on the glass and feeling suspended
- 5** The Forbidden Wall and the remnants and memories of the past



Tour Guide

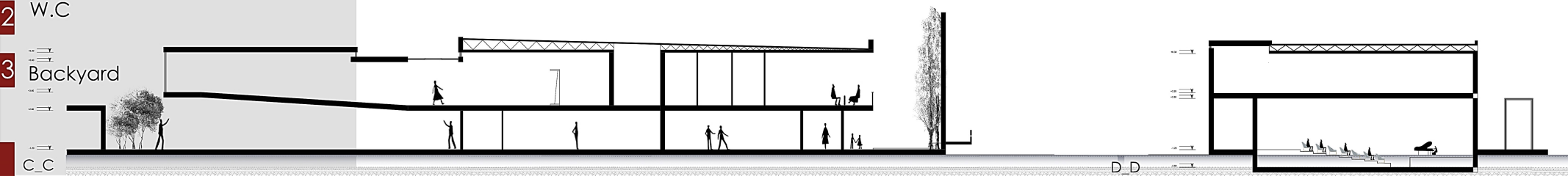
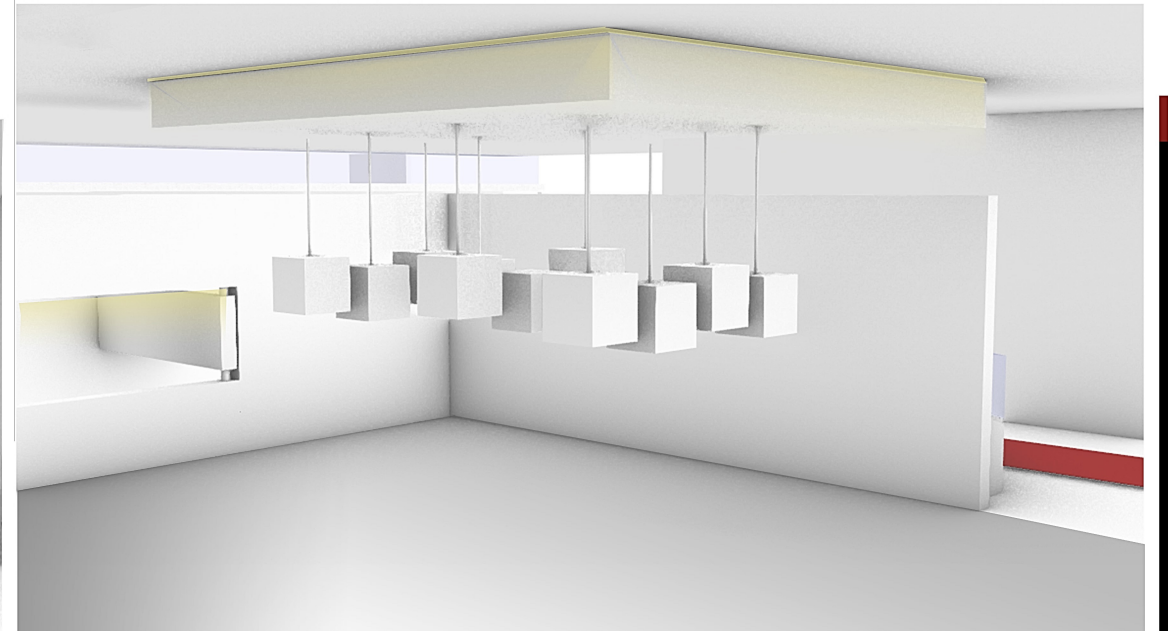
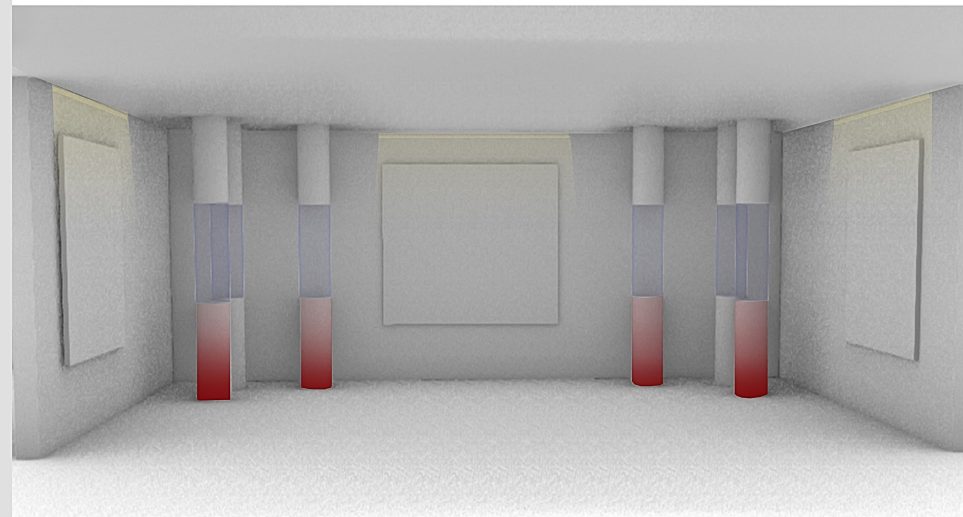
- 1 Entrance hall
- 2 Information and tickets
- 3 Painting, sculpture gallery
- 4 Suspended corridor
- 5 Gallery of temporary works
- 6 Porch
- 7 Quiet courtyard
- 8 Water storage
- 9 Crossing the alleys
- 10 workshops
- 11 Conference Room
- 12 W.C





Tour Guide

- 1 Crossing the water depot
- 2 Gallery of Visual Arts
- 3 Dark corridor
- 4 Photo Gallery
- 5 Cafeteria
- 6 Kitchen and services
- 7 Bridge-shaped canopy
- 8 Office entrance
- 9 Porch for employees to rest
- 10 Shiny hallway
- 11 Guard and protection
- 12 W.C
- 13 Backyard



Materials

- 1 Iron panels
- 2 Mirror glass
- 3 Copper rods
- 4 Mesh glass
- 5 Polished concrete
- 6 Half wooden columns
- 7 Concrete with rough texture

